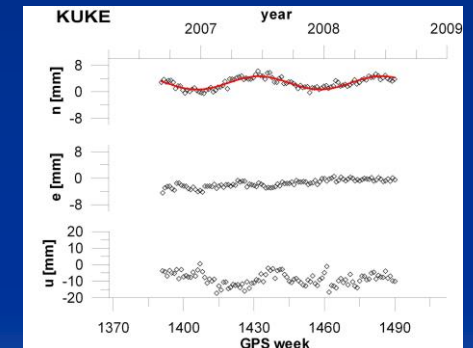
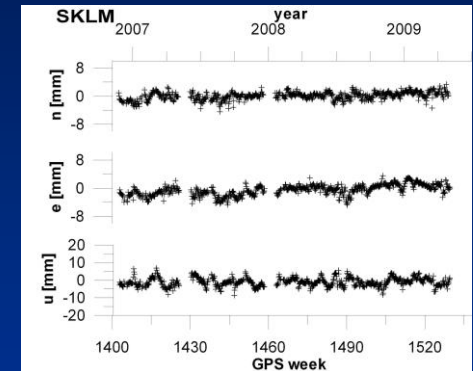




SKPOS official reference frame

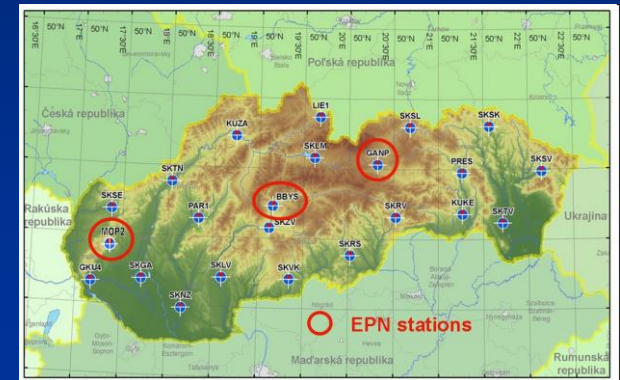
- **ETRF2000 (epoch 2006.636)**
- Computation
 - Data from 4 weeks period (from 1412 to 1415 week)
 - Bernese software v.5.0
 - Antennas absolute phase center variation
 - GPS+GLONASS
 - 10 EPN stations
- Adjustment
 - WIGS program
 - ITRF2000 velocity model
- Maintenance
 - Coordinate monitoring
 - Time series analysis (daily data, weekly data)
- Plan for near future – new reference frame introduction
 - ETRF2000 (R05) - estimation from near 3 years data sets





SKPOS & EPN crossing

- SKPOS involved 3 EPN stations
 - GANP
 - EPN station since 320/2003
 - SKPOS station since 236/2006
 - BBYS
 - EPN station since 035/2007
 - SKPOS station since 327/2006
 - MOP2
 - EPN station since 237/2008
 - SKPOS station since 098/2009





National (SKPOS) realization vs. EPN reference frame

- Only GANP station has estimated EPN precise **ETRF2000 (epoch 2000.0)** coordinates (www.epncb.oma.be)
- Differences Δ with compare to national reference frame **ETRF2000 (epoch 2006.636)** in table

Station	ΔX	ΔY	ΔZ	Δn	Δe	Δh
GANP	13mm	22mm	16mm	4.5mm	-16.1mm	-25.1mm
BBYS	-	-	-	-	-	-
MOP2	-	-	-	-	-	-