



Status and Perspectives of the Geodesy, Cartography and Cadastral Authority – Availability of Geographic Information in Slovakia

Hedviga Májovská



Geodesy, Cartography and Cadastral Authority of the Slovak Republic



State administration

The Government Office of the Slovak Republic

- The Ministry of Foreign Affairs of the Slovak Republic
- The Ministry of Economy and Construction of the Slovak Republic
- The Ministry of Defence of the Slovak Republic
- The Ministry of Interior of the Slovak Republic
- The Ministry of Finance of the Slovak Republic
- The Ministry of Culture and Tourists of the Slovak Republic
- The Ministry of Health Service of the Slovak Republic
- The Ministry of Education, Science, Research and Sport of the Slovak Republic
- The Ministry of Justice of the Slovak Republic
- The Ministry of Labour, Social Affairs and Family of the Slovak Republic
- The Ministry of Agriculture, Environment and Regional Development of the Slovak Republic
- The Ministry of Transport, Posts and Telecommunications of the Slovak Republic

- **Geodesy, Cartography and Cadastre Authority of the Slovak Republic**
- Antimonopoly Office of the Slovak Republic
- Statistical Office of the Slovak Republic
- The National Inspection Office of Labour of the Slovak Republic
- The Industrial Property Office of The Slovak Republic
- Slovak Office of Standards, Metrology And Testing
- Nuclear Regulatory Authority of the Slovak Republic
- Telecommunications Office of the Slovak Republic
- INFOSTAT, Institute of Informatics and statistics

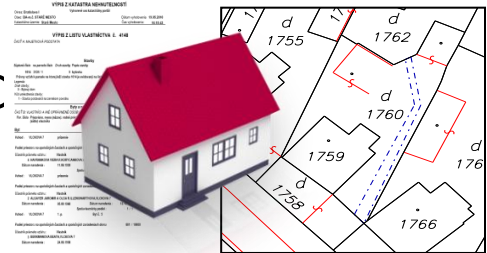


Legal framework

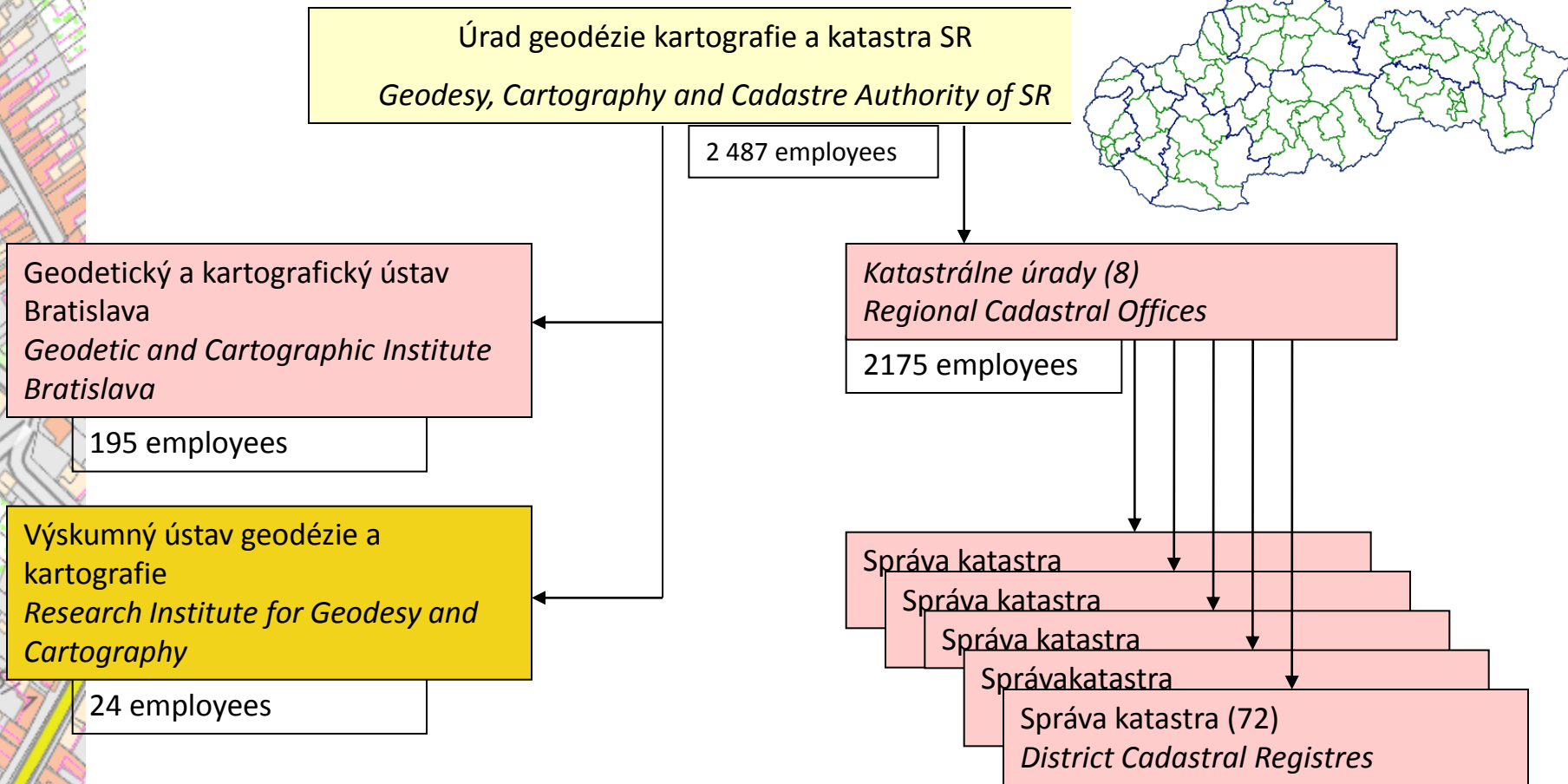
- Act on Geodesy nad Cartography
- Act on Cadastre of Real Estate
- Act on National Spatial Data Infrastructure

Main tasks

- realisation of reference systems, geodetic controls,
- GNSS real-time positioning service - SKPOS,
- state map series,
- standardisation of geonames,
- central map archive
- Information System on Geodesy, Cartography and C
 - Geodetic controls
 - Cadastre (ownership rights + graphical information)
 - Reference topographical database **as the basis for NSDI**
- provision of the information from the state documentation

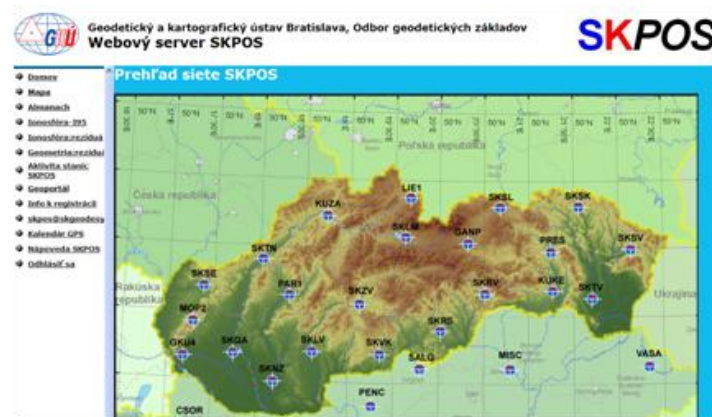
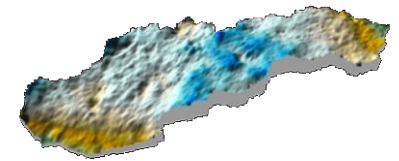


Organisational structure

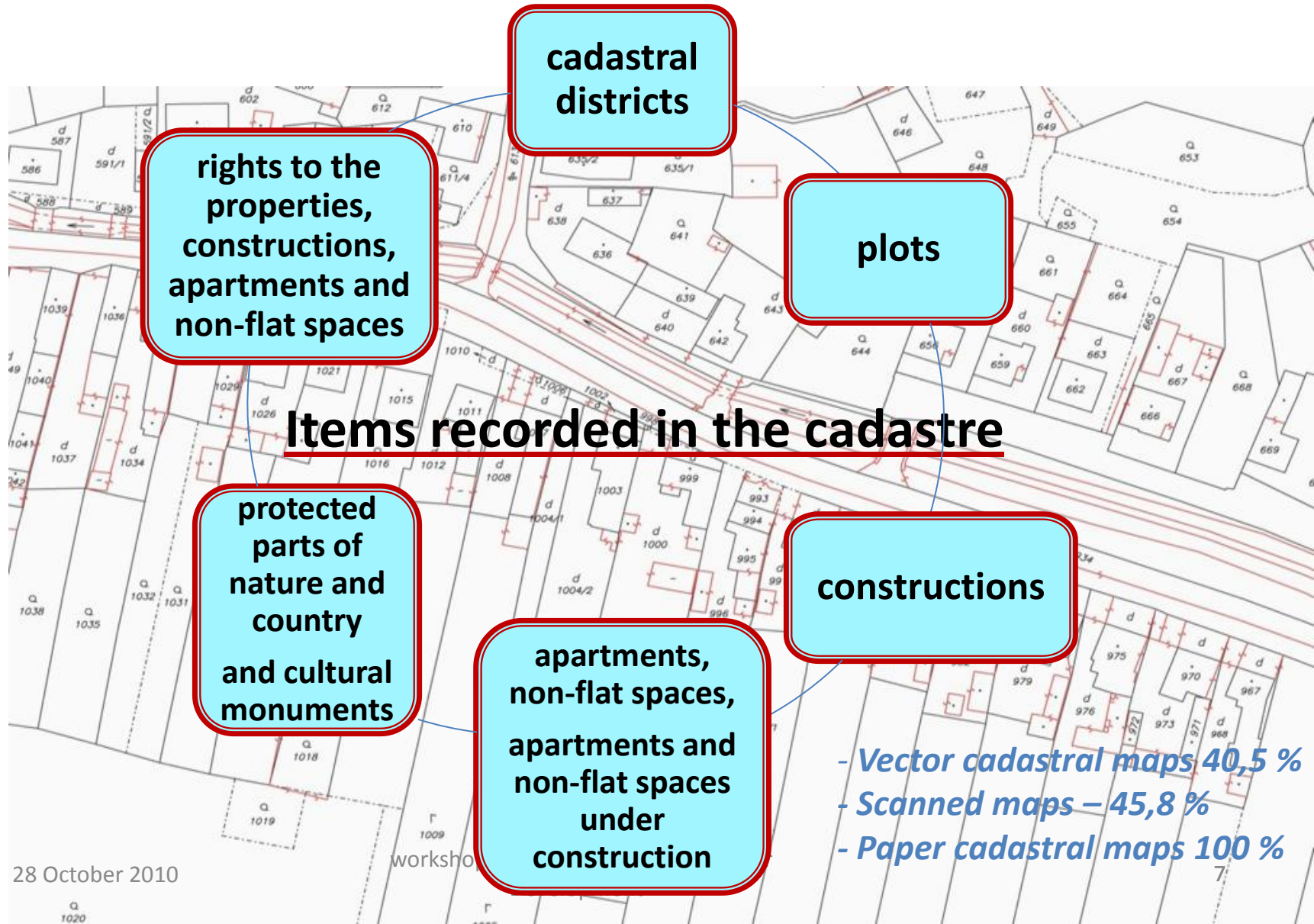


Reference systems as basis for unified location of geographic information

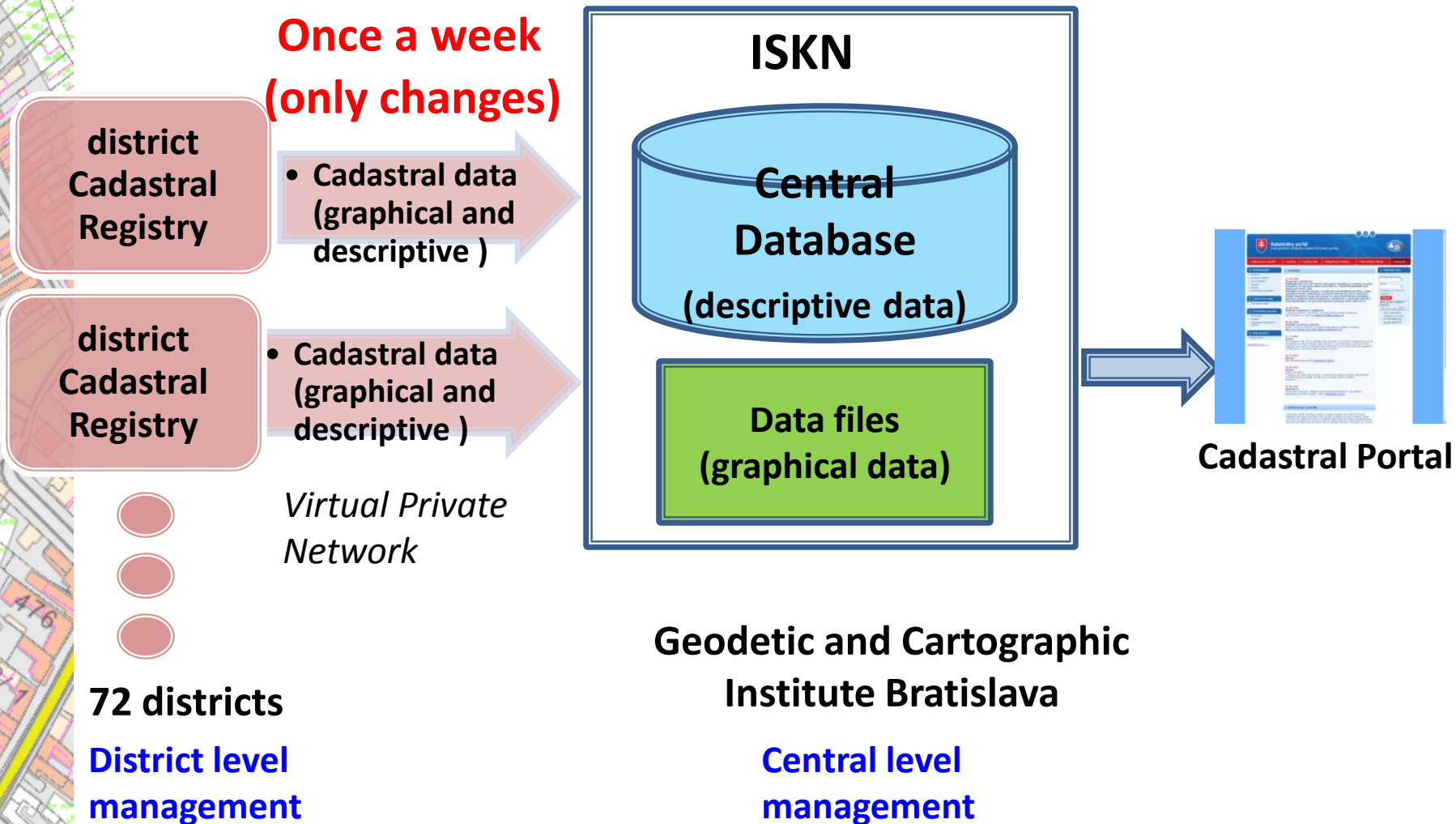
- spatial ETRS89
- horizontal S-JTSK, new frame JTSK03
- vertical BpV
- SKPOS in ETRS89 - ideal tool for real-time data collection for NSDI



Cadastral of real estate



Decentralized IS on cadastre





Reference data for GIS (ZBGIS)

- geometrical and positional frame for NSDI
- public administration is obliged to use ZBGIS for their thematic GIS
- public administration is obliged to submit their data to update ZBGIS
- aerial photogrammetry
- cooperation between MoD and GCCA
- year 2010 – finished the data collection – data available for the whole Slovakia
- updating is necessary – 3 years interval
- state map series

Data and information provision

The image displays a screenshot of the Geoportal ÚGKK SR website, which is the web server for SKPOS (Slovakian Land Registry). The browser window shows the URL <http://www.geoportál.sk/sp/>. The website header includes the logo of the Geodetic and Cartographic Institute of Bratislava and the text "GEOPORTÁL Úradu geodézie, kartografie a katastra SR".

Below the header, there is a navigation menu with the following items:

- Domov
- Mapa
- Almanach
- Ionosféra-195
- Ionosféra:reziduá
- Geometria:reziduá
- Aktivita stanic SKPOS
- Geoportál
- Info k registrácii
- skpos@skgeodesy
- Kalendár GPS
- Nároveň SKPOS
- Odhlásiť sa

The main content area features a map titled "Prehľad siete SKPOS" (Overview of SKPOS network) showing the geographical distribution of SKPOS stations (SKSE, MOP2, GKU4, SKGA) in Slovakia. To the right of the map is a search interface for land registry data, titled "Katastrálny portál Úradu geodézie, kartografie a katastra Slovenskej republiky".

The search interface includes a navigation bar with the following links:

- Informácie o portáli
- Novinky
- Napište nám
- Aktualizácia údajov
- Najčastejšie otázky
- Pomocník

The search form is titled "Vyhľadanie podľa vlastníka" (Search by owner) and includes the following fields:

- Kraj: (Celá SR - kraj nevybraný) ?
- Okres: ?
- Obec: ?
- Katastrálne územie: ?
- Vlastník - názov: ?
- Vlastník - dátum narodenia: ?
- Vlastník - IČO: ?
- Overenie kódu: ?

Buttons for "Vyhľadať" (Search) are provided for each field. A "Nový kód" (New code) button is located below the verification code field. A "Klientská zóna" (Client zone) section is also visible, containing a login form with fields for "Prihlasovacie meno:" (Username) and "Heslo:" (Password), and a "Prihlásiť:" (Login) button.

At the bottom of the page, there is a footer with the text: "Aplikáciu vytvorila Ness Technologies Verzia 1.9 production" and "Aplikáciu prevádzkuje Geodetický a kartografický ústav Bratislava".

INSPIRE

<i>Annex I</i>	<i>Annex II</i>	<i>Annex III</i>
Coordinate reference systems	Elevation	Statistical units
Geographical grid systems	Land cover	Buildings
Geographical names	Orthoimagery	Soil
Administrative units	Geology	Land use
Adresses		Human health and safety
Cadastral parcels		Utility and governmental services
Transport networks		Environmental monitoring facilities
Hydrography		Production and industrial facilities
Protected sites		Agricultural and aquaculture facilities
		Demography ...





„Informatisation of the society“

- 2 projects (2009 – 2012) funded by EU
- infrastructure for provision of electronic services :
 - *Cadastre*
 - *Reference topographical data*
- electronical services as part of the e-Gov
- electronical services as part of ESDI (INSPIRE)



Project – electronical cadastral services

- decentralized system \Rightarrow centralized system
- graphics and descriptive inf. in common database
- scanning of the paper documents
- electronic registry
- new mapping – 4 pilot projects
- upgrade of the cadastral portal
- web services: CSW, WMS, WFS,
- electronical submissions for the registration



Project – reference topo-database

- upgrade of the photogrammetry processing system,
- update of the feature catalogue,
- methodologies
- quality control according to ISO
- metainformation system
- geoportal with CSW, WMS, WFS, WFS-T
- trading with geodata
- state maps

Plans for further development

- provision of authorized, quality data, delivered in time
- long-term data updating
- national standards for data harmonisation
- implementation of ISO, OGC
- DEM
- orthoimageries
- flood maps
- new cadastral mapping
- 3D cadastre



Thank you for your attention.

hedviga.majovska@skgeodesy.sk