



NORWEGIAN MAPPING
AUTHORITY

NORWEGIAN MAPPING AUTHORITY

SPATIAL DATA – FOR THE BENEFIT OF SOCIETY

NORWEGIAN MAPPING AUTHORITY

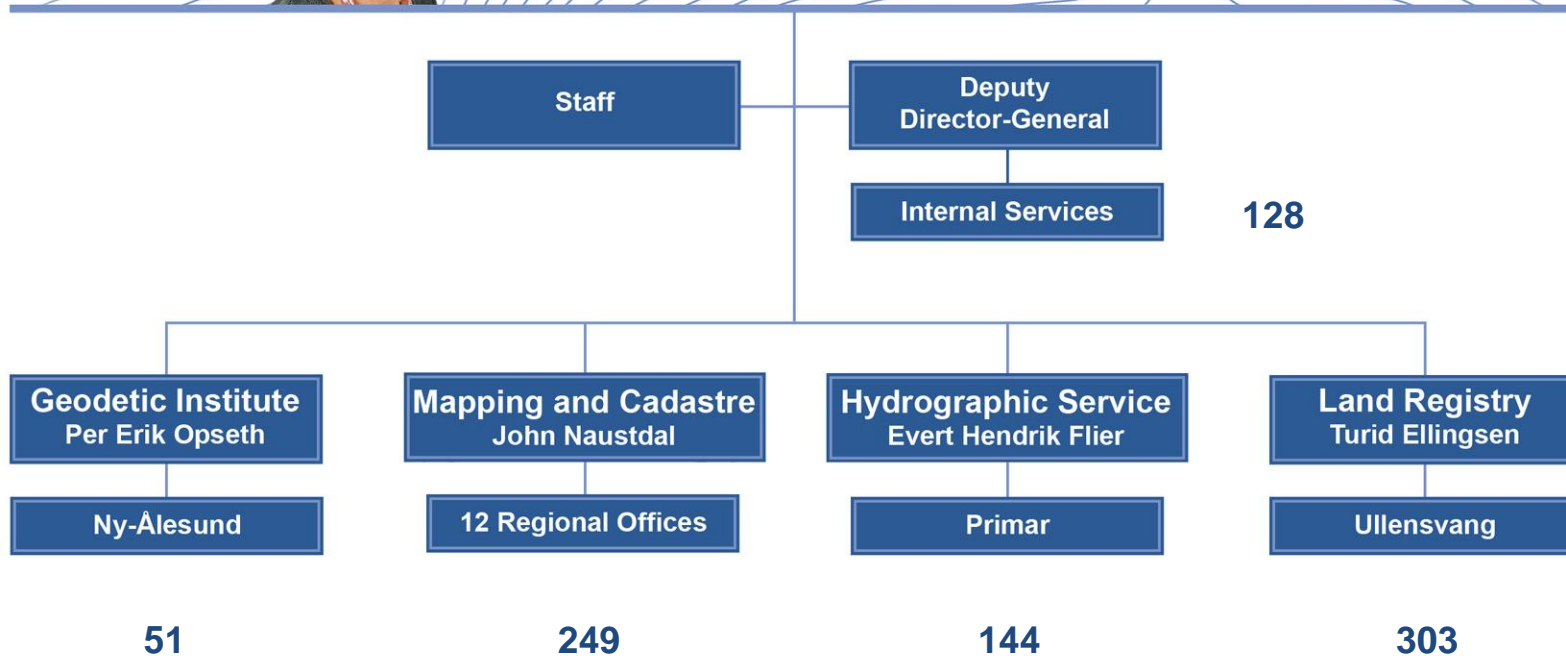
- Geodesy, topographic mapping, hydrographic mapping, cadastre and land registration
- Public directed by the Ministry of the Environment
- 14 offices nation-wide
- Annual turnover 2009: 105 million Euro
 - Production of basic topographic data and orthophotos co-funded with many public institutions
- 875 staff
- Extensive co-operation with private sector
 - Most data collection and production of geographic data out-sourced to private companies on tender.



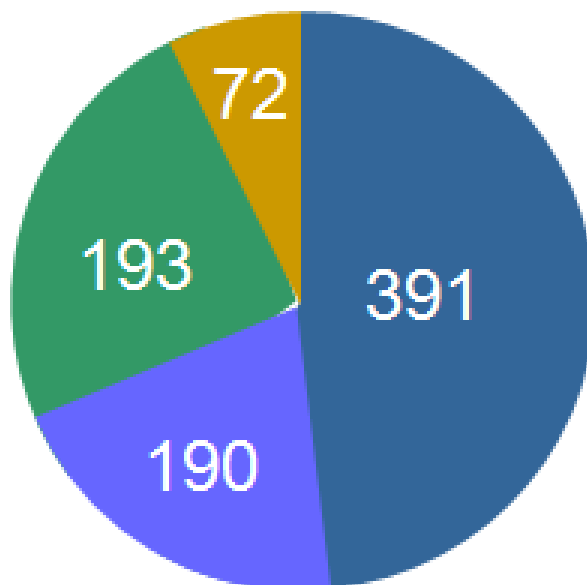
STATENS KARTVERK



Director-General Anne Cathrine Frøstrup



FUNDING 2009



- State budget – The Ministry of the Environment
- Ministry of Justice and Police – Land Register
- Public sector joint funding
- Revenues from distribution



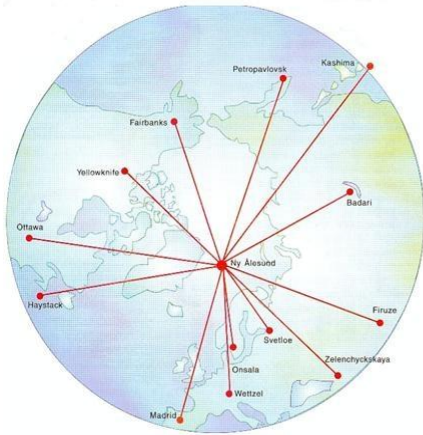


TASKS

- Define frameworks for the Norwegian Spatial Data Infrastructure
- Administrator and co-ordinator for NSDI Norway
- Produce, manage and make available geographic information defined as a government responsibility
 - Geodetic network and services for accurate positioning
 - Basic topographic data and digital map series for land and sea
- National databases for Cadastre and Land Register
- International co-operation and government funded projects abroad
 - Centre for Property Rights and Development



CONTRIBUTE TO MONITORING CLIMATE CHANGE



Fluctuations in the earth's rotation

Movements in the earth's crust

Changes in the sea level



NMA's infrastructure at Spitzbergen

Land uplift

Changes in the the Gulf Stream

Data to the GPS-system



REAL ESTATE INFORMATION

- Two separate Real Estate Databases:
 - A centralized cadastre database with technical information about parcels, buildings, apartments and addresses + map
 - Cadastral surveying and data registration done by 430 municipalities
 - A centralized Land Register database with legal information
 - All data registration centralized to two offices
 - Documents registered within 4 days
 - Moving to electronic documents
 - No notaries
- Provides an integrated data service to users



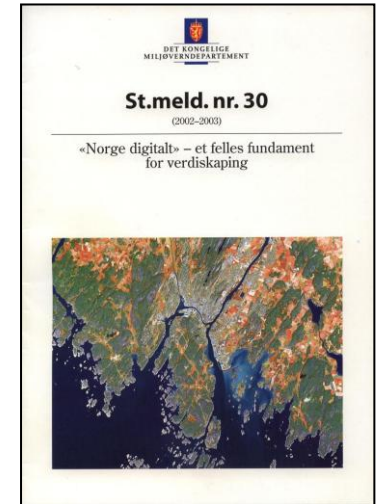
LAND REGISTRATION – FROM COURTS TO NMA

- From decentralised registration at 87 local courts to centralised registration at the head office of NMA
- Transferred gradually to NMA from 2004-2007
- 2009: 1 350 000 documents registered
- www.tinglysing.no



NSDI NORWAY = NORWAY DIGITAL

- A Parliamentary White Paper accepted by the Parliament on June 18, 2003
 - Political consent essential
 - Law on geodata adopted in June 2010
 - NMA becoming the national NSDI authority
 - Standards, methodologies, basic geographic data
 - NSDI based on partnership with over 600 stakeholders



NORWEGIAN SPATIAL DATA INFRASTRUCTURE

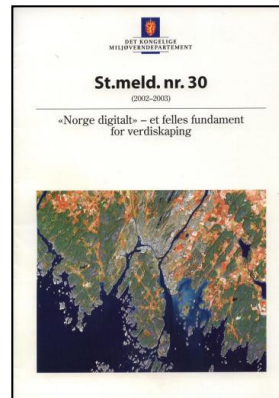
1992

Geovekst

- All municipalities
- Norwegian Public Roads Administration
- Telenor (Telecommunication)
- Energy sector
- Agriculture and forestry sector
- NMA

Formalized collaboration for basic mapping

2003



The Norwegian Parliament

2005

Norway Digital

- Geovekst partners
- County departments
- National departments
- NMA is the coordinator and administrator
- Total 603 partners

Formalized collaboration for mapping, management and distribution of map data and thematic geographic information



STRATEGY 2010 - 2015



- Ensure efficient work processes from data acquisition till distribution.
- Ensure satisfactory data quality, that data are continuously updated and available 24/7.
- Ensure efficient distribution of data and stimulate increased use of data.
- Facilitating a well functioning land market



KEY CHALLENGES

- Implementation of Inspire
- Financing
- Pricing of data
 - Increasing demand for free and gratis data
- Quality of the municipal cadastre works
 - Difficult to ensure quality with 430 municipalities doing cadastral works with no licensing of surveyors or registration personnel
- Electronic submission of legal documents
- Functioning register of land use plans to be an integrated part of e-services to the land market
- Recruitment - too few students in geomatics

